



GOOD REASONS FOR

XrFuse 2 & 6

ELECTRIC FUSION MACHINE

A DIVERSE RANGE OF APPLICATIONS

The user interface is designed in such a way that it can meet the need for consistency of a production laboratory, while at the same time giving the analytical chemist the flexibility to modify parameters as required. Cold-to-cold operation means it is an ideal solution where the health and safety requirements of a production environment need to be strictly adhered to.

If on the other hand, method development is the critical requirement, the instrument can be configured in a custom manner to meet specific experimental needs.

High Accuracy and Purity

For applications such as mineral sands where high accuracy and purity is required across a broad range of elements, the absence of contamination is a significant benefit.

Programmable Fusion Parameters

- Preheating temperature and duration
- Main heating temperature and duration
- Rocking duration, speed and amplitude
- Stand duration
- Pouring angle
- Cooling (2 stages)
- Pause at any time
- Fusion complete-alarm
- XRF or ICP Mode

Established Technology

The XrFuse range of electric fusion machines has been developed based on more than 25 years of experience of fusion technology and applications. Now available in both a 6 place high volume solution and a 2 place compact model to cater for the needs of broad range of customers. The XrFuse range represents the best elements of XRFS established electrical fusion range with significant advances in safety and design. Designed with the latest thermal imaging technology, consumer tested in the biggest laboratories in the world, XrFuse is designed with the customer in mind.

KEY FEATURES



Zero Contamination

The ceramic cradle and holders ensure that the environment for creating beads has zero contamination in comparison with that typically found with Inconel based solutions.

Simple User Interface

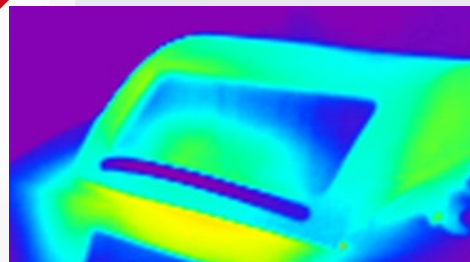
Simple touch screen interface. The User Interface is simple to use and provides the flexibility to cope with the simplest operation on a repeatable basis or the most complex one off experiments.





Process Visibility

The glass viewing panel allows the customer to view the key elements of the fusion process in action. This is particularly important for method development.



Safe Operation

The external surfaces of the instrument have been modelled and developed with the latest IR technology to ensure all contact surfaces are safe to touch.



Process Flexibility – XRF or ICP mode

The machine is designed to allow for both XRF or ICP processes. Simple access, control and monitor, at the touch of a button.

Built to Last

The XrFuse range has evolved from robust and reliable technology developed for high volume, high up time applications in the Iron Ore industry in Australia. This tough environment has driven the development of machines with component lifetimes of up to 3 times of that of our major competitors. When you buy an XrFuse, it's built to last!

TECHNICAL SPECIFICATIONS

XRF, ICP AND ALKALI FUSIONS

| Technical specification | 2 place | 6 place |
|-----------------------------|---|--|
| Construction | Single external aluminium case | |
| Lid | Cool touch glass viewing window Safety-interlocked during fusion and standby mode | |
| Size (HxWxD) | 580x780x800mm H 800mm with lid open | 580x1110x 800mm H 800mm with lid open |
| Weight | 80kg | 100kg |
| User interface | Touch screen user interface password protected engineer levels | |
| Programmable recipes | Up to 12 user-defined recipes with naming flexibility | |
| Insulation | Ceramic fibre board | |
| Maximum temperature | 1250°C, real time temperature reading | |
| Heating elements | Silicon carbide | |
| Thermocouples | Type R | |
| Over temperature protection | 2nd thermocouple and insulation case thermostat | |
| Power requirement | 50/60Hz, 1/3-phase, 208–220 Volt | 50/60Hz, 3-phase, 380–415 or 208–220 Volt |
| Power consumption | 4kW | 6kW |
| Cradle / mould holders | Hi-purity ceramic, contamination proof | |
| Crucible | 30–40g | |
| Mould | 32/40mm, 40–100g | |
| Throughput | Up to 10 samples per hour | Up to 30 samples per hour |
| Safety | Emergency stop button Cold-to-cold operation Maximum external temperature of 50°C CE certified independently tested by Pilz Cat 4 rated dual safety circuit | |
| Noise | <70db | |

We reserve the right to change the design or specification of our products without notice. Some of the information contained in this brochure is general in nature and customers should check that it is applicable to their individual circumstances.

ONGOING SUPPORT

The purchase of an XrFuse is the beginning of an ongoing relationship where we provide a range of services to our customers.

Whether you are new to fusion or a seasoned professional, we have a range of services to increase the accuracy and throughput of your application.

- Advice on appropriate selection of flux and standards
- Organization of platinum remake processes
- Technical advice on difficult fusion issues
- On-site support and preventative maintenance programs

Please see our website for more details of our representatives in your area:
www.xrfscientific.com

THE COMPLETE SOLUTION



Flux

We are the world's pre-eminent manufacturer of flux. We can provide standard borate fluxes or custom solutions to meet your specific needs.



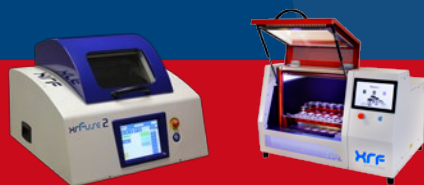
Labware

We manufacture labware for all our fusion instruments in house. We can also provide a remake service for the transfer from other labware designs.



Weighing

The XrWeigh allows the rapid and accurate measurement of flux. Increasing laboratory throughput and process repeatability.



SALES AUSTRALIA

XRF Technology (WA) Pty Ltd

67 Boulder Rd. Malaga

Western Australia, 6090 Australia

P: +61 (0) 8 6240 3000

F: +61 (0) 8 6240 3099

E: sales@xrfscientific.com

SALES EUROPE

XRF Scientific Europe SPRL

Avenue de Roodebeek 282

1030 Schaerbeek, Belgium

P: +32 (0) 2 762 77 12

F: +32 (0) 2 762 55 07

E: info.eu@xrfscientific.com

XRF Scientific Europe GmbH

Seligenstädter Str. 100

63791 Karlstein, Germany

P: +49 (0) 6188 954 2761

F: +49 (0) 6188 954 2799

E: stefan.lang@xrfscientific.com



CORPORATE OFFICE

XRF Scientific LTD

86 Guthrie Street

Osborne Park WA 6017, Australia

P: +61 (0) 8 9244 0600

F: +61 (0) 8 9244 9611

E: info@xrfscientific.com

www.xrfscientific.com